

**Anti-VEGFB Reference Antibody (CSL346)**  
**Recombinant Antibody**  
**Catalog # APR10748****Specification**

---

**Anti-VEGFB Reference Antibody (CSL346) - Product Information**

|                   |                            |
|-------------------|----------------------------|
| Application       | FC, Kinetics, Animal Model |
| Primary Accession | <a href="#">P49765</a>     |
| Reactivity        | Human                      |
| Clonality         | Monoclonal                 |
| Isotype           | IgG4SP                     |
| Calculated MW     | 145 KDa                    |

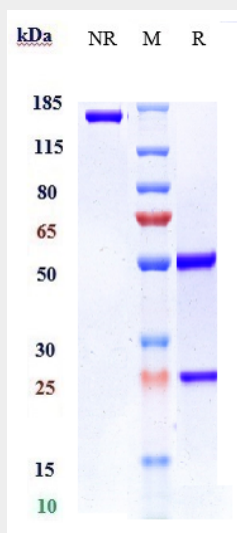
**Anti-VEGFB Reference Antibody (CSL346) - Additional Information****Target/Specificity**  
VEGFB**Endotoxin**  
< 0.001EU/ µg,determined by LAL method.**Conjugation**  
Unconjugated**Expression system**  
CHO Cell**Format**  
Purified monoclonal antibody supplied in PBS, pH6.0, without preservative.This antibody is purified through a protein A column.**Anti-VEGFB Reference Antibody (CSL346) - Protein Information****Name** VEGFB**Synonyms** VRF**Function**  
Growth factor for endothelial cells. VEGF-B167 binds heparin and neuropilin-1 whereas the binding to neuropilin-1 of VEGF-B186 is regulated by proteolysis.**Cellular Location**  
Secreted. Note=Secreted but remains associated to cells or to the extracellular matrix unless released by heparin**Tissue Location**  
Expressed in all tissues except liver. Highest levels found in heart, skeletal muscle and pancreas

## Anti-VEGFB Reference Antibody (CSL346) - Protocols

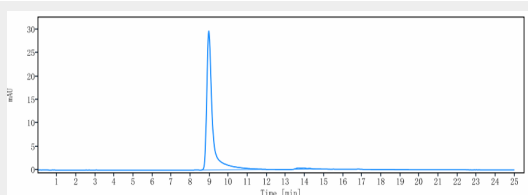
Provided below are standard protocols that you may find useful for product applications.

- [Western Blot](#)
- [Blocking Peptides](#)
- [Dot Blot](#)
- [Immunohistochemistry](#)
- [Immunofluorescence](#)
- [Immunoprecipitation](#)
- [Flow Cytometry](#)
- [Cell Culture](#)

## Anti-VEGFB Reference Antibody (CSL346) - Images



Anti-VEGFB Reference Antibody (CSL346) on SDS-PAGE under reducing (R) condition. The gel was stained with Coomassie Blue. The purity of the protein is greater than 95%



The purity of Anti-VEGFB Reference Antibody (CSL346) is more than 98.5% ,determined by SEC-HPLC.